


# DAM-B



  
*Engineering  
GREAT Solutions*

**Steam attemperator**

# DAM-B: Steam Attenuator

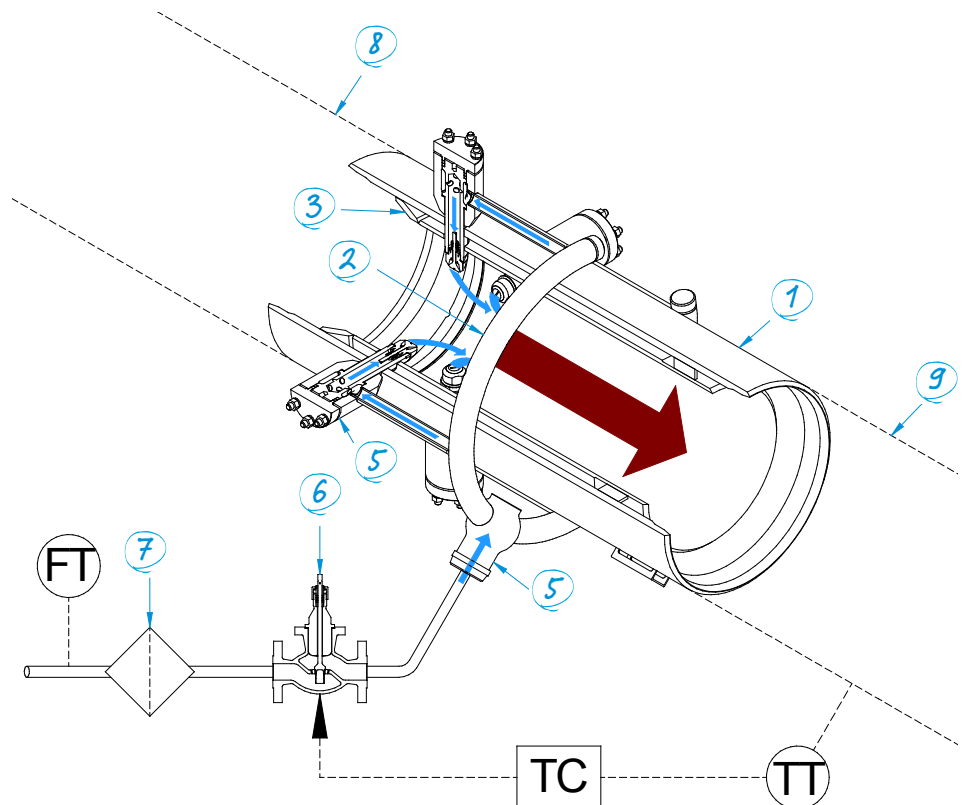
Attenuation is the primary technique used for controlling the degree of superheat in a boiler or a Heat Recovery Steam Generator (HRSG). This is achieved through a controlled injection of water into the superheated steam. Attenuators are typically installed between superheater stages in order to regulate the output temperature of the boiler/HRSG, as well as protect any secondary superheater pipes from damage owing to excessive heat. The temperature controller for this attenuator (called inter-stage) bases its temperature regulation on input from a temperature transmitter placed on the boiler/HRSG output. A secondary attenuator (called final stage) is often placed after the inter stage temperature transmitter in order to prevent thermal damages to the steam turbine during start-up. The final stage attenuator ensures that the steam temperature upstream the turbine does not rise too fast.

The DAM-B is a high performing ring style attenuator with a welded flow profiling liner for superior evaporation and performance. It complies with all existing standards and is always pressure tested on both the steam side as well as the water side.

## Key features

The DAM-B attenuator is installed in the steam pipe with a number of water atomising nozzles attached. The size of the nozzles, their number and insertion length may differ depending on steam desuperheating needs and steam pipe diameter.

- > The DAM-B is able to handle severe thermal cycling
- > The nozzles receive water from a common spray water pipe encircling the steam pipe, supplying water evenly across the nozzles.
- > Spray water flow is controlled via an external spray water valve connected to the DAM-B water connection piece. This valve is regulated via a temperature control system that uses the downstream steam temperature to determine the amount of spray water needed. The placement of the temperature transmitter and the installation of the steam pipe are of critical importance for achieving accurate steam temperature regulation. For more information see IMI CCI document 'II500.12: System Design Considerations - DAM-B'.
- > A flow profiling liner is welded to the inside of the DAM-B body to improve system turndown and to protect the steam pipe against thermal shock and erosion in the downstream pipe.



1. DAM body
2. Water pipe
3. Liner
4. Water connection piece
5. Spray nozzle
6. Spray water control valve
7. Strainer
8. Upstream steam pipe
9. Downstream steam pipe

- TT. Temperature sensor/  
transmitter  
TC. Temperature control  
FT. Spray water flow  
transmitter

## Benefits

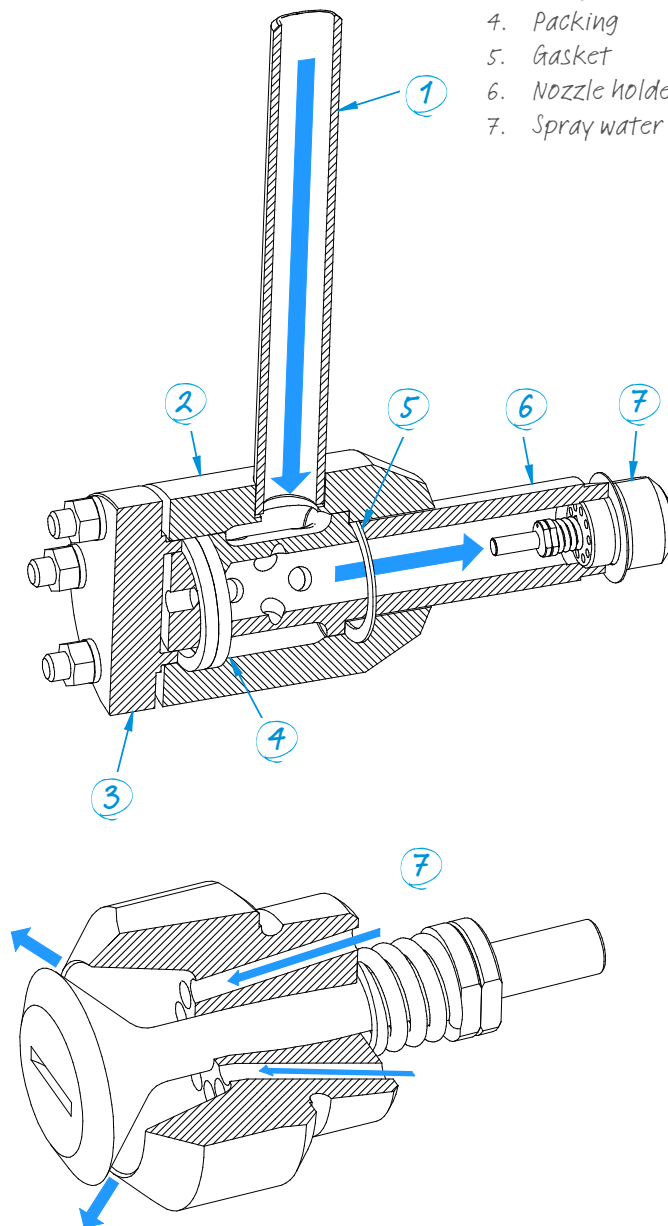
- > Designed to handle large spray water flow quantities
- > Distributed the spray water evenly in the steam desuperheater
- > Negligible pressure drop in the steam line
- > Welded profiling liner installed as standard
- > Nozzle design prevents flashing inside the nozzle
- > Each nozzle maintains a certain water atomisation pressure at any flow condition
- > Can be redesigned as flow meter

## Spray nozzles

The atomising spray nozzle is housed inside a nozzle holder inserted into the pipe outlet. Water is routed through the pipe leg and the nozzle chamber before being supplied to the spray nozzle.

- > The nozzle itself has a spring loaded plug which extends as the pressure in nozzle holder increases. The amount of water being injected by each nozzle is determined by a number of factors, including the diameter of the nozzle body opening, adjustment of the spring, and the pressure differential between the steam pipeline and the water pipeline.
- > The cooling water enters the inner nozzle chamber through a number of water channels. Water is rotated around the nozzle plug thanks to the special arrangement of the water channels. The plug and the seat are designed to create maximum water velocity at the nozzle edge point. The high velocity of the water when it leaves the nozzle guarantees fine atomisation, quickly evaporating the spray water.
- > In order to maintain a specific opening water pressure inside the inner nozzle chamber, the nozzle plug is preloaded by a spring. The force required to open the nozzle is set by the adjustment nut.
- > As the nozzles spray perpendicular to the steam flow, the high relative velocity of water to steam creates an efficient secondary level of atomisation.

1. Pipe leg
2. Nozzle stud
3. Flange
4. Packing
5. Gasket
6. Nozzle holder
7. Spray water atomising nozzle



## General product specification

### Capacity

Unlimited (Depends on size and number of orifices)

### Pressure class

DIN PN 16-320  
ANSI 150-2500

### Materials

Steam pipe material is adapted to connecting pipe material.

Nozzles and springs are made from X19CrMoVNb11.1 as standard.

Alternatively, nozzles and springs can be made available in inconel, suitable for high temperature applications and conditions without water injection.

### Rangeability

Nozzle turndown:

Limited only by turndown of selected water control valve.

System turndown:

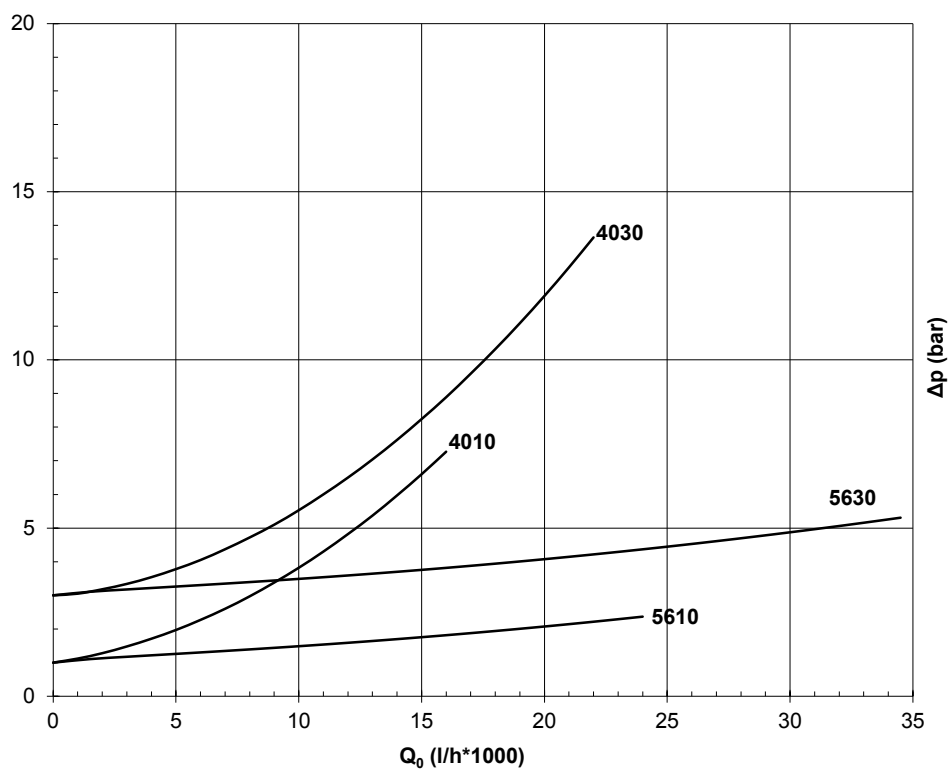
Minimum steam velocity depends on pressure, temperature and superheat, but should typically not be below 6-8 m/s (20-25 ft/s).

## Opening Pressure (OP) nozzle specification

Spring-loaded OP nozzles come in a number of sizes with different capacities and opening pressures.

Opening pressure ( $\Delta p$ ) is defined as the pressure differential between the water inlet and the DAM outlet.

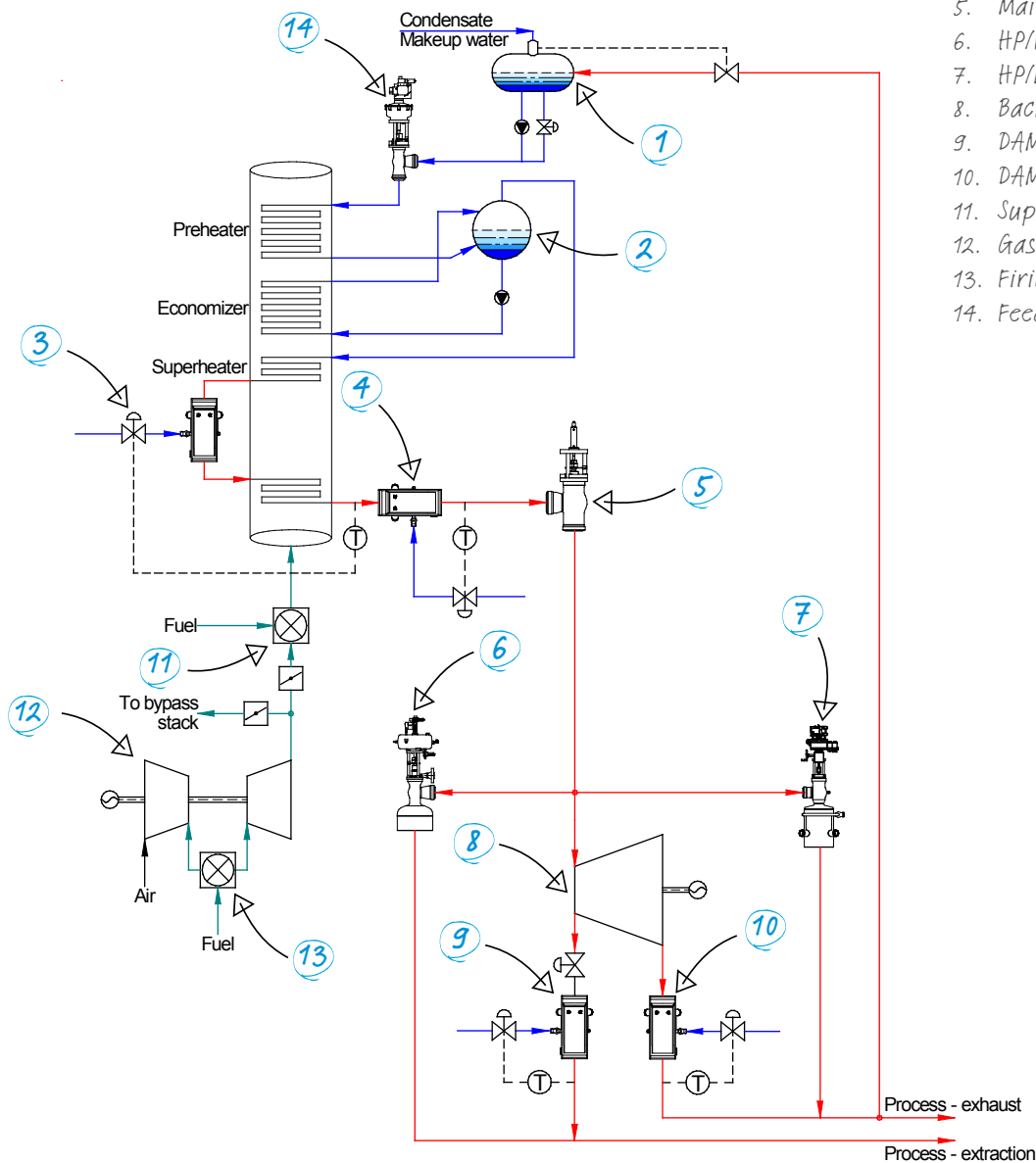
$Q_0$  = Required cooling water flow (l/m)



## Example

The example below shows two attemperators (3 and 4) installed in a desalination plant, controlling the steam turbine input temperature. More attemperators can be used for lower pressure stages if reheating is performed. As the DAM-B attemperators are mechanically atomising, they do not require high pressure atomising steam to vaporise the water droplets. Steam that can instead be used for the desalination plant.

1. Feed water tank
2. Drum
3. Inter-stage attemperator
4. Final stage attemperator
5. Main stop valve
6. HP/IP bypass
7. HP/LP bypass
8. Backpressure steam turbine
9. DAM extraction desuperheater
10. DAM exhaust desuperheater
11. Supplementary firing
12. Gas turbine
13. Firing chamber
14. Feed water control valve



**IMI CCI Australia**

33 South Corporate Avenue  
Rowville  
Melbourne 3178  
Australia

Tel: +61 3 9213 0800

**IMI CCI China**

B3, 303 Xinke Road  
Qingpu  
Shanghai  
201707  
PR China

Tel: +86 21 3973 8000  
Fax: +86 21 6495 0620

**IMI CCI Korea**

14 Dangdong 2-ro  
Munsan-eup  
Paju-si  
Gyeonggi-do  
Korea 10816

Tel: +82 2 792 1877  
Fax: +82 2 792 1878

**IMI CCI SriCity**

No 900 North R-1 Sri City SEZ  
Sathyavedu Mandal  
Chittoor District  
Andhra Pradesh 517588  
India

Tel: +91 85 7639 8000  
Fax: +91 85 7639 8035

**IMI CCI Austria**

Lemböckgasse 63/1  
1230 Wien  
Austria

Tel: +43 1 869 27 40  
Fax: +43 1 865 36 03

**IMI CCI Dubai**

P.O. Box 17827  
Light Industrial Unit  
BJ04 South Zone 1  
Jebel Ali – Dubai  
United Arab Emirates

Tel: +971 4 886 1477  
Fax: +971 4 886 1476

**IMI CCI Malaysia**

K-7-5 & K-7-6  
Solaris Mont Kiara, SOHO  
Jalan Solaris, Mont Kiara  
50480 Kuala Lumpur  
Malaysia

Tel: +60 3 6412 3500  
Fax: +60 3 6412 3588

**IMI CCI Sweden**

Industrigatan 3  
661 29 Säffle  
Sweden

Tel: +46 533 689 600  
Fax: +46 533 689 601

**IMI CCI Bangalore**

6th floor Warp tower SJR i park  
Plot #13 14 & 15 EPIP Zone  
Phase 1  
Whitefield Road  
Bangalore 560066  
India

Tel: +91 80 4030 3500  
Fax: +91 80 4030 3531

**IMI CCI Houston**

4525 Kennedy Commerce Drive  
Houston  
Texas 77032  
USA

Tel: +1 832 467 7200  
Fax: +1 713 849 2948

**IMI CCI RSM**

22591 Avenida Empresa  
Rancho Santa Margarita  
California, 92688  
USA

Tel: +1 949 858 1877  
Fax: +1 949 858 1878

**IMI CCI Switzerland**

Itaslenstrasse 9  
CH-8362 Balterswil  
Switzerland

Tel: +41 52 264 9500  
Fax: +41 52 264 9501

**IMI CCI Brazil**

Rua Itapeva 286  
cj 95 to 98  
Sao Paulo  
CEP 01332-000  
Brasil

Tel: +55 11 2691 3361  
Fax: +55 11 2539 0287

**IMI CCI Italy**

Via Giacomo Leopardi 26  
20123  
Milano  
Italy

Tel: +39 02 4345 8611  
Fax: +39 02 4345 8624

**IMI CCI Singapore**

29 International Business Park  
ACER Building Tower A  
#04-01

Singapore 609923  
Tel: +65 6653 7000  
Fax: +65 6822 7001

**IMI CCI UK**

Unit A3  
Brookside Business Park  
Middleton  
Manchester  
M24 1GS

Tel: +44 (0)161 655 1680  
Fax: +44 (0)161 655 1689

**IMI CCI Brno**

K letišti 1804/3  
Štapanice 627 00  
Brno 27  
Czech Republic

Tel: +420 511 188 288  
Fax: +420 511 188 245

**IMI CCI Japan**

6-2-2 Takatsukadai  
Nishi-ku, Kobe  
Hyogo 651-2271  
Japan

Tel: +81 78 322 1220  
Fax: +81 78 322 1221

**IMI CCI South Africa**

18 Van Rensburg Avenue  
Klipfontein  
Witbank  
1035  
South Africa

Tel: +27 13 697 3305  
Fax: +27 13 697 3303

[imicci.sales@imi-critical.com](mailto:imicci.sales@imi-critical.com)

**IMI Critical Engineering**

Lakeside, Solihull Parkway  
Birmingham Business Park  
Birmingham B37 7XZ  
United Kingdom

Tel: +44 (0)121 717 3700  
Fax: +44 (0)121 717 3701

[www.imi-critical.com](http://www.imi-critical.com)